

EXTRO® STRIPPER

Operating Manual

Read before use and keep safe

Table of Contents

1.0	Technical Data	Page 2
2.0	Safety	Page 2
3.0	Safety instructions	Page 2
4.0	Maintenance	Page 3
5.0	Use	Page 4
6.0	Information about various floorings	Page 6
7.0	Troubleshooting	Page 6
8.0	Spare Parts/Schematic	Page 7
9.0	Blade Selection	Page 11



1.0 Technical Data/Technical Description

Power Supply	230V /110V
Power Consumption	2500W /2300W
Number of Strokes	5000 strokes/min
Sound Pressure Level	92 dB(A)
Sound Energy Level	105 dB(A)
Hand/Arm-Vibration	10 m/s ²
Weight	247 lbs
Comes with:	Extro ® Stripper, 2 rigid blades, safety goggles and tool kit.

2.0 Safety

The Sinclair Extro® Stripper is state of the art designed and meets all standard safety requirements.

2.1 Safety Instructions

Disconnect the power supply before any maintenance is carried out.

Use only recommended blades and make sure the blade is sharp before starting.

Only qualified personnel should undertake maintenance. Use only genuine Sinclair spare parts.

Transport

Always remove the blade before transporting the machine.

CAUTION!!! ALWAYS WEAR EAR AND EYE PROTECTION! CAUTION!!!

Using this machine without ear and eye protectors may jeopardize or harm your health. It may harm especially your ears and increase the risk of an accident.

PLEASE READ DETAILED SAFETY INSTRUCTIONS ON COLORED SHEET BEFORE USING MACHINE!

3.0 Introduction

This operating manual should be used to receive the maximum benefit from your Extro® Stripper. Following these instructions will both extend the life of your machine and reduce repair costs.

Please make sure any user of the machine is familiar with these instructions before work begins.

3.2 Danger while working with the machine

The Extro® Stripper is designed to the highest technical standards. Incorrect use can be dangerous!

Use this machine only:

- **As instructed in this operating manual.**
- **With the machine in perfect working order.**

Disturbances that could impair safety have to be eliminated at once.

3.3 Restriction of use

The Extro® Stripper is exclusively for removing bonded floor covering in dry environments. It should not be used for any other purpose. Sinclair Equipment Company cannot be held responsible for any damage or loss caused by incorrect use. Correct use also includes:

- To take care of all directions from the operating manual and
- The execution of maintenance and service.

3.4 Genuine Spare Parts

Spare parts and accessories are manufactured uniquely for the Extro® Stripper. It must be emphasized that parts obtained from unauthorized sources must not be used.

Sinclair Equipment Company cannot be held responsible for the performance of or any damage arising from the use of machines in which genuine spare parts have not been used.

This is particularly important with replacement blades.

4.0 Maintenance

The Extro® Stripper is virtually maintenance free. Have the guides of the swing bolts lubricated from time to time (after approx. 1640 sq. feet). The lubricator nipples are located collateral on the front side (see picture). The used grease will flush dirt out of the machine. Press maximum 3 to 4 times with the grease gun. Never press too much grease into the machine. Otherwise the mechanism will be blocked.



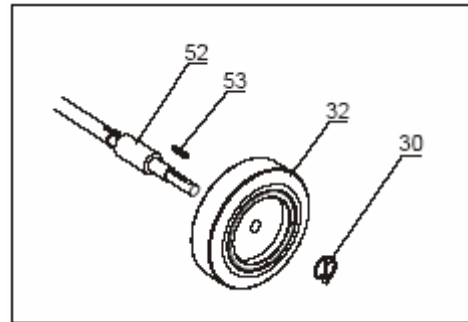
Changing the blade

Disconnect the power supply and put on the blade protection before changing the blade. Use work gloves for your own safety.

- Tip the machine
- Put on the blade protection (enclosed in the tool set)
- WARNING!! VERY SHARP BLADE ! YOU MANY CAUSE INJURY WITHOUT USING THE BLADE PROTECTION!!**
- Secure the tipped machine from tilting over
- Clean and loosen screws of the blade mounting
- Attention!** Set the wrench at a position opposite to the blade to avoid injury.
- Replace the blade

Changing the driving wheels

Remove the splint-pins and pull the wheels from the axle. Do not loose the springs under any circumstances!



5.0 Use

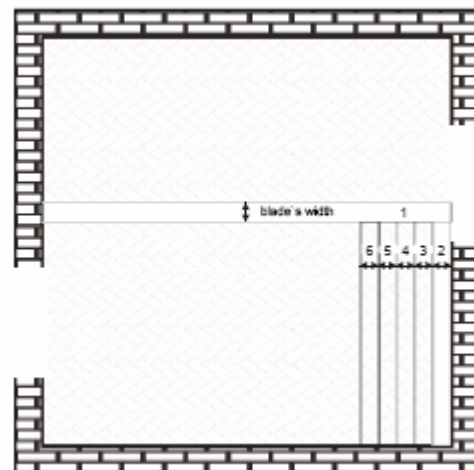
The Extro® Stripper removes any bonded floor coverings in strips. This procedure corresponds with the customary method of using a hand floor scraper. The stripper works with a steel blade at very high frequency, minimizing vibration and noise.

The Extro® Stripper is self-propelled. The motor actuates both the blade and the machine movement. The blade drive starts as soon as the machine is switched on. The hand clutch will engage the drive.

Preparations

Before starting work, cut the floor covering into strips of about 30cm (12 inch). You cannot work faster if you cut wider strips.

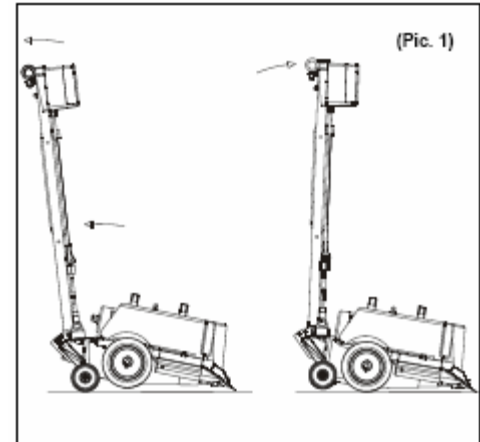
To begin, cut one strip crosswise. Then lift the flooring slightly in order to get the blade underneath it. We recommend to cut the first strip at right angles to the main working direction. By so doing access to the adjacent strips is made easier. Cut the strips smaller if the floor covering is bonded very securely, e.g. with and epoxy adhesive. The blades are sharpened by the floor pavement. Therefore the blade has to be changed only if it is twisted or becomes worn.



The driving wheels are subject to wear. They have to be changed after approximately 16mm (0.6 inch) of the surface has been worn away. Otherwise the working angle of the striking apparatus will not be correct especially critical with cork or foam backed carpets.

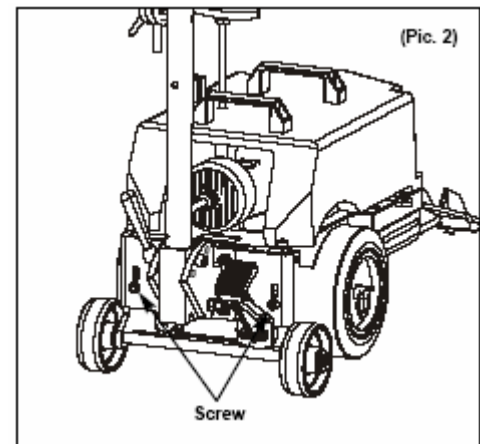
5.1 Pull Back

The patented Pull Back system was developed to allow for an easy pulling back of the Extro Stripper. (Pic. 2) When you have reached a wall or another obstacle during your work, simply pull the handle to lift the driving wheels. The machine comes to a standstill although the wheels continue to rotate. If you pull the handle more powerfully, you can pull back the machine to the place where the next lane is to be stripped off. If the handle is moved forward again, the driving wheels reach the floor again and the machine moves forward. When working, make sure the handle is pressed gently to the front so that the small transportation rollers are lifted.



5.1.1 Locking the Pull Back system

For certain floors, it may be required to lock the Pull Back system. Use the two screws in the lifting brackets. (Pic. 2) Unscrew the screws, press the handle to the front and tighten the screws through the lifting brackets to the angled clips. If you pull the handle, the blade is lifted from the floor immediately without stopping the drive.



5.2 Switching on the machine

The Extro® Stripper is equipped with a power-on indicator lamp and an operating switch located at the top of the switch housing. The switch has a restart protection for low voltage failures. If the lamp does not indicate power-on, use another power socket or check power supply.

The machine is switched on by pressing the green button. The drive and the impact system start at the same time. When the red button is pressed, the machine is switched off. Note the after-running of the machine.

6.0 Information about various floorings

CV-floorings, PVC-floorings and carpets without foam backing

Cut strips of approx. 30 cm (12 inch) width. If the flooring is bonded very tight, cut strips smaller. The machine should remove the flooring without slipping wheels.

Carpets with foam backing

A sharp blade is essential in order to ensure the floor covering is removed together with the foam backing. Remove floorings across the width, particularly if you have any uneven sub-floor.

Tiles

Use blade of the same width as the tiles and use a new blade. Tiles above size 30 x 30 cm (12 x 12 inch) has to be cut into half. If the sub-floor is uneven, use smaller blades.

In all cases, check from time to time to ensure the blade is still sharp. If it is not or any distortion has occurred, replace it immediately.

7.0 Trouble shooting

Trouble	Eventual Cause	Elimination
Machine does not run	Power supply disconnected blown fuse defective cable or plug	Have machine repaired by a qualified electrician, respective change parts
Undue force necessary or excessive vibration	Blade is blunt	Change blade
Excessive vibration	Expendable parts are worn out	Return machine for service/or repair

8.0

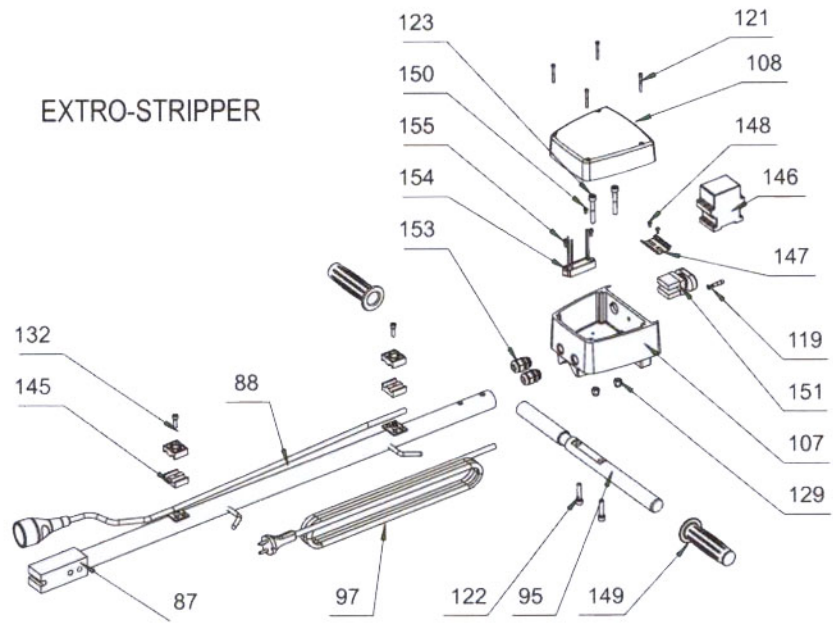
Extro Stripper Schematic

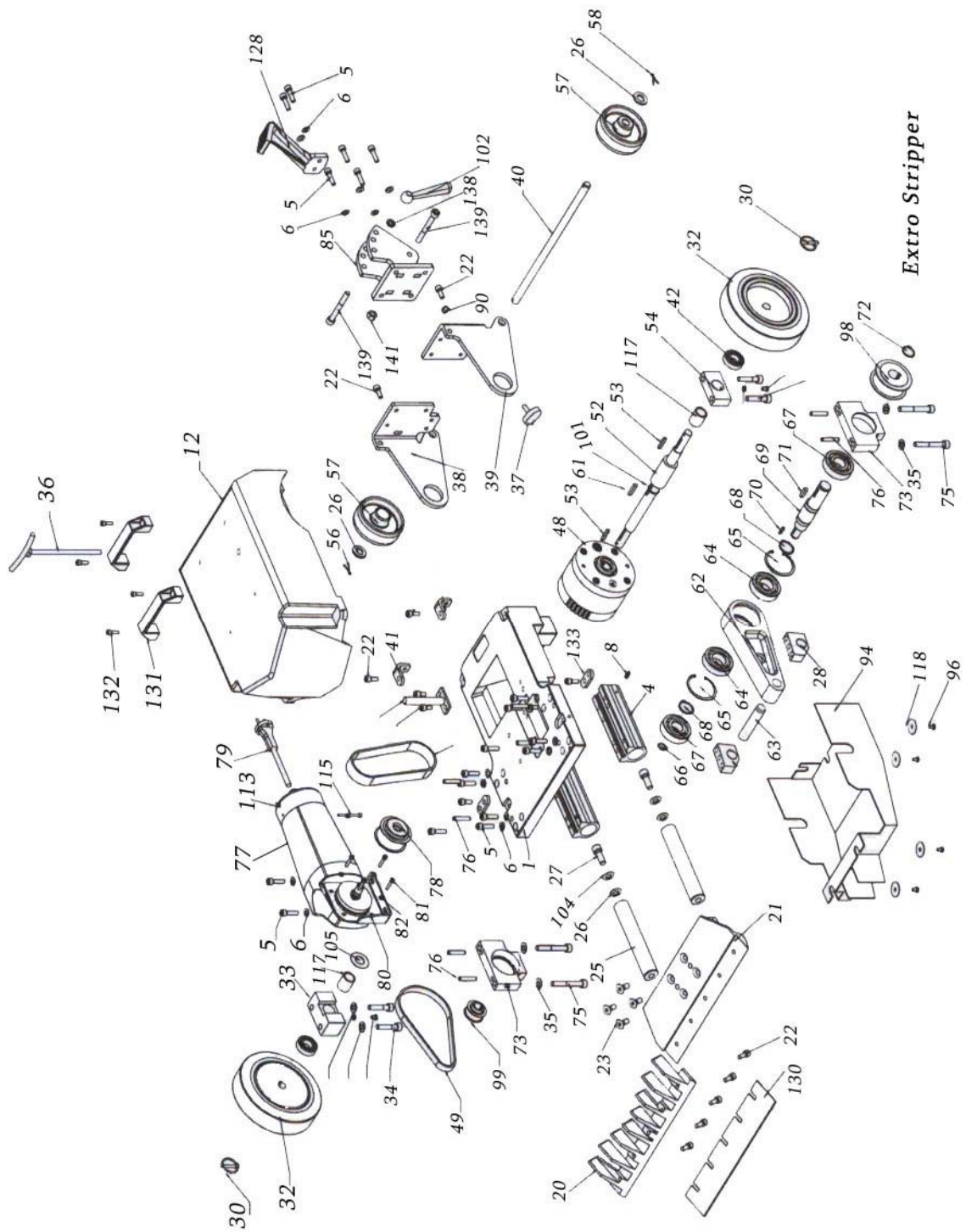
Schematic

#	Description	Part #	Old Part #
1	Chassis		N/S
4	Piston block	016228	02 571 0410
5	Screw M 8x30	014736	00 911 4500
6	Washer, M8	014860	D00 944 9500
8	Lubricating nippel	014914	00 979 0100
12	Cover weight	021504	021504
13	Screw M 8x25	014734	00 911 4300
20	Blade holder / Jaw	015126	02 572 2000
21	Striking foot Turbo	015127	02 572 2100
22	Cyl. screw M8x25 - 6mm	014734	00 911 4300
23	Screw M10x25	014763	00 912 5200
25	Piston rods	015132	02 572 2500
26	Washer, 13 MM	014833	00 941 2750
27	Screw M 12x30	014744	00 911 6200
28	Connecting block (Left or Right)	015417	07 480 0030
30	Wheel pin	014888	00 963 2000
32	Drive wheel B16	015135	02 574 3200
33	Gear mounting block right	015033	021505
34	Screw M 10x45	014741	09 115 50
35	Safety washer, 10 mm	014861	00 944 9600
36	T Screw (short)	021599	021599
37	Rubber Stopper	032752	032752
38	Lift bracket right	032743	032743
39	Lift bracket left	032741	032741
40	Transport axle	015143	02 574 5800
41	Bracket	032746	032746
42	Ball bearing 6004	014703	014703
46	Washer 6mm	014859	00 944 9300
48	Gear block	015140	02 574 4800
49	Small drive belt	014938	00 982 0300
52	Drive shaft axle	015142	02 574 5200
53	Key 5x5x32	014902	00 968 3700
54	Gear mounting block left	015036	01 257 4540
57	Nylon wheel	014954	014954
58	Split pin 3, 2x32	014886	00 963 0400
61	Nut key 6x6x32	014904	00 968 4700
62	Connecting rod	015144	02 575 6200
63	Connecting rod pin	014875	00 961 7900
64	Ball bearing 6206	014710	00 620 6250
65	Circlip I 62	014856	00 943 0400
66	Circlip A 17	014850	00 942 7700
67	Ball bearing 6305	014712	00 630 5250
68	Circlip A 30	014853	00 942 8200
69	Excenter shaft Turbo	015145	02 575 6900
70	Nut key 4x4x20	014901	00 968 2300
71	Key 6x6x25	014903	00 968 4400
72	Circlip A 25	014852	00 942 8100
73	Bearing block right or left	017079	T00 000122
75	Screw M 10x70	014742	00 911 5750
76	Cyl. pin 8x40	014876	00 961 8100

77	Motor 2400 Watt - 110 Volt	015056	01 576 7650
78	Drive sprocket Z 20 motor	015129	02 572 2200
79	Electrical cord with plug	014973	00 990 2100
80	Motor Plate Bracket, new	016860	H00000127
81	Screw M 5x25	014721	09 112 80
82	Washer, 5 mm	014858	00 944 9200
84	Drive belt large	014937	00 982 0200
85	Handle angle bracket		00 000 099
87	Handle		00 000 021
88	Electrical cord short	014974	00 990 2200
94	Bottom Cover	015154	02 577 9400
95	Screw M6 x 12	014799	00 921 2000
97	Electrical cord long	014970	00 901 000
98	Belt pulley Z 24 - Large	015155	02 577 9800
99	Belt pulley Z 12 - Small	015156	02 577 9900
101	Groove ring	014845	00 942 1600
102	Locknut / Wingnut M10	014820	00 931 6100
104	Washer, M12	014862	00 944 9700
105	Starter disc / PVC Washer		02 578 0500
107	Switch Housing, Large	015430	07 485 0200
108	Switch cover	020970	020970
113	Motor cover (neu)	015130	02 572 2250
115	Screw M 5x90 Neu	014724	00 911 2940
117	Bushing 20x26x30	014910	00 971 3000
118	Washer M6	014835	00 941 4800
121	Screw, M4 x 12	015210	00 911 1800
122	Cyl. screw M8 x 40	014738	00 911 4600
123	Cyl. screw M8 x 50	017551	017551
128	Tilt support / Foot Pad	015125	02 571 2100 BR00 932
129	Cap Nut, M8	014825	2000
130	Replacement blade - See Blade Selection sheet		
131	Handle/Grip		00 980 0500
132	Cyl. Screw, micro M6 x 20	014752	D00 911 9990
133	Bracket	015107	02 571 0010
135	Conductor	015110	02 571 1210
136	Cyl. Screw, M8 x 16	017651	00 911 4200
138	Split washer		N00000091
140	Belt pulley 6797/M10		N00000090
141	Hexagon nut 985/M10		00 931 4400
145	Double Clamp	017511	T017511
146	Contactora 115V		K00000411
147	Top Hat Rail	020969	020969
148	Binding head M4x6	020970	020970
149	Grip covering	014922	00 980 3000
150	Screw 84/M4x8	017473	00 913 1250
151	Push button	021233	021233
153	Screw connection	014922	00 993 0400
	Without Drawing:		
	Tool Kit		02 578 1800
	Motor Brush		02 576 8500
	Carrying Chain w/Handle		02 578 1700
	6mm Wrench		T7 289 A17
	Hydraulic Mineral Oil 2oz		T0 999 999

EXTRO-STRIPPER





Extro Stripper

TURBO/EXTRO/SUPER STRIPPER

*Super Stripper uses 12" Blades Only

#10-4804 6" Rigid, #10-4803 8" Rigid Blade. Use these blades for difficult removal like, epoxy, rubber floors, sport surfaces, etc. Always position these blades to far left hand side of machine.

#10-4652 12" Rigid Blade, #10-4802 14" Rigid Blade. The standard blade for carpet, vinyl or adhesive removal, pre-cutting of the floor is needed.

#10-4651 12" Flexible Blade. For use with the Super Stripper on uneven concrete surfaces and some soft foam back carpet.

#10-4801 14" Flexible Blade. For use with the Turbo/Extro Stripper on uneven concrete surfaces and some soft foam back carpet.

#10-4651D 12" Self-Dicing Blade. For use with the Super Stripper on carpet, rubber or vinyl. A real time saver, on pre-cutting necessary since blade will cut strips with knife edged sides.

#10-4801D 14" Self-Dicing Blade. For use on carpet, rubber or vinyl. A real time saver, on pre-cutting necessary since blade will cut strips with knife edged sides.

#10-4651T 12" Tile Blade. For use on VAT and VCT tile. Prevents tile from jamming in between blade and blade holder. A must for tile removal to protect blade holder.

#10-4807 14" X 5" Ceramic/Parquet Blade. Ideal for removal for ceramic tile, marble, parquet, and other wood floors. Precutting needed for plank floors.

#10-4809 Special Ceramic/Parquet Blade. This ¼" thick heavy duty blade is designed especially for the ceramic tile and hardwood/parquet removal applications. The 14" wide blade extends out nearly 4" and is designed at a specific angle to work more efficiently in cutting and lifting of thick materials. Best suited for the long run, constant use in tile/wood applications for extended life and performance.

BRAVO/DURO/ECO STRIPPER

#10-4906 8" Rigid Blade. Our standard blade for removal of vinyl, carpet, adhesive, etc. Bevel edge of blade should be up for concrete and down for wood sub-surfaces. Precutting of carpet and vinyl needed.

#10-4904 8" Flexible Blade. Same as above, yet for uneven concrete surfaces and some soft foam back carpet.

#10-4907T 8" Tile Blade. For use on VAT and VCT tile. Prevents tile from jamming in between blade and blade holder. A must for tile removal to protect blade holder.

#10-4909 8" Razor Blade Attachment. An adapter to secure razor blades for removal of adhesives, paints and thin films. Inexpensive and an excellent choice for complete clean up after floor covering removal. **#11-525 8" Razor blades for Razor Blade Attachment.**

#10-4903 8" X 5" Rigid Blade. Ideal for hard to reach areas such as toe kicks, under radiators, etc. Also used for clean up of small areas of parquet, ceramic, etc.

#10-4906D 8" X 2.5" Rigid Self-Dicing Blade. For use on carpet, rubber or vinyl. A real time saver, on pre-cutting necessary since blade will cut strips with knife edged sides.

JUNIOR STRIPPER

#10-4641 4.5" Rigid Blade

#10-4642 5.5" Rigid Blade

#10-4643 8" Rigid Blade

The standard blade for removal, of cushion back and soft vinyls on wood or concrete surfaces, wallpaper, paint and abatement removal.

#10-4643F 8" Flexible Blade - Same as above, yet for uneven surfaces.

NOTE: All jobs can vary in difficulty of removal. Whatever blade you are using it may be necessary to take a smaller bite in removal so it is less stressful on the operator as well as the machine. If you have any questions on blade selection or choice of machine, please do not hesitate to call Sinclair Equipment Company or your nearest distributor.

STANDARD WARRANTY

SINCLAIR EQUIPMENT COMPANY'S tools are warranted to be free of defects in workmanship and materials for a period of one year from the date of original purchase. Should any trouble develop during this one year period, return the complete tool, freight prepaid, to SINCLAIR'S authorized Service Center. If inspection shows the trouble is caused by defective workmanship or materials, SINCLAIR EQUIPMENT COMPANY will repair, or, at its option, replace without charge.

- This warranty does not apply to malfunctions caused by damage, unreasonable use, faulty repairs made by others, or failure to provide recommended maintenance.
- The warranty is void if the product is altered by the original consumer purchaser, or if it is used in a manner not recommended by the manufacturer.
- The warranties do not cover consequential damages or transportation charges incurred with the replacement or repair of SINCLAIR EQUIPMENT COMPANY products.
- Not responsible for lost job or down time.

In no event shall SINCLAIR be liable for any indirect, incidental, or consequential damages from the sale or use of the product. This disclaimer applies both during and after the term of this warranty.

SINCLAIR EQUIPMENT COMPANY disclaims liability for any implied warranties, including implied warranties of "merchantability" and "fitness for a specific purpose", after the one year term of this warranty.

This warranty gives you specific legal rights, and you may have other rights which vary from state to state. Should you have any questions, contact SINCLAIR EQUIPMENT COMPANY at (530) 626-9386.

To obtain warranty service, deliver or send the complete tool, prepaid, to SINCLAIR EQUIPMENT COMPANY. Be sure to include the following information:

- Nature of failure;
- Name and address of distributor where tool was purchased;
- Application of tool when rendered defective; and
- Proof of purchase.

To obtain individual repair parts, contact SINCLAIR EQUIPMENT COMPANY with the following information:

- Tool model number;
- Item part number; and
- Description of part.

