



***TURBO® STRIPPER***  
***Operating Manual***

***Read before use and keep safe***

**Table of Contents**

1.0	Technical Data	Page 2
2.0	Safety	Page 2
3.0	Introduction	Page 2
4.0	Maintenance	Page 4
5.0	Use	Page 5
6.0	Information about various floorings	Page 6
7.0	Trouble Shooting	Page 6
8.0	Spare Parts/Schematics	Page 9
9.0	Blade Selection	Page 23



## 1.0 Technical data/technical description

Power supply	110-120V AC
Power consumption	2200W, 20A with current limiter
Number of strokes	5000 strokes/min
Sound pressure level	92 dB(A)
Sound energy level	105 dB(A)
Hand/Arm-Vibration	10 m/s <sup>2</sup>
Weight	308 lbs
Comes with:	Turbo® Stripper, 2 rigid blades, safety goggles and tool kit.

## 2.0 Safety

The Sinclair Turbo® Stripper is state of the art designed and meets all standard safety requirements.

### 2.1 Safety Instructions

Disconnect the power supply before any maintenance is carried out.

Use only recommended blades and make sure the blade is sharp before starting.

Only qualified personnel should undertake maintenance. Use only genuine Sinclair spare parts.

#### **Transport**

Always remove the blade before transporting the machine.

#### **CAUTION!!! Always wear ear and eye protectors! CAUTION!!!**

Using this machine without ear and eye protectors may jeopardize or harm your health. It may harm especially your ears and increase the risk of an accident.

#### **PLEASE READ DETAILED SAFETY INSTRUCTIONS ON COLORED SHEET BEFORE USING MACHINE!**

## 3.0 Introduction

This operating manual should be used to receive the maximum benefit from your Turbo® Stripper. Following these instructions will both extend the life of your machine and reduce repair costs.

Please make sure any user of the machine is familiar with these instructions before work begins.

### **3.2 Danger while working with the machine**

The Turbo® Stripper is designed to the highest technical standards.

Incorrect use can be dangerous!

Use this machine only:

- **As instructed in this operating manual.**
- **With the machine in perfect working order.**

Disturbances that could impair safety have to be eliminated at once.

### **3.3 Restriction of use**

The Turbo® Stripper is exclusively for removing bonded floor covering in dry environments. It should not be used for any other purpose. Sinclair Equipment Company cannot be held responsible for any damage or loss caused by incorrect use. Correct use also includes:

- To take care of all directions from the operating manual and
- The execution of maintenance and service.

### **3.4 Genuine Spare Parts**

Spare parts and accessories are manufactured uniquely for the Turbo® Stripper. It must be emphasized that parts obtained from unauthorized sources must not be used.

Sinclair Equipment Company cannot be held responsible for the performance of or any damage arising from the use of machines in which genuine spare parts have not been used.

**This is particularly important with replacement blades.**

## 4.0 Maintenance

The Turbo® Stripper is virtually maintenance free. The guide shaft castings require lubrication from time to time. (after approx. 1650 sq. feet). Initially the machine is fully lubricated and should not require any additional lubrication for the first 5000 square feet. The zirc fittings are located on each side. (See Diagram 1) To Grease the gearbox on it's right side, remove left wheel and bottom cover. Spin axel/gearbox to expose zirc fitting. (See Diagram 2) Put 2 to 3 pumps to gearbox every 50 to 75 hours. The used grease will flush dirt out of the machine. Replacement lubrication should be a Lithium based chassis type lube (i.e. auto grease gun pack).



Diagram 1



Diagram 2

**CAUTION!!** Press maximum of 3 times with the grease gun. Never press too much grease into the machine. Otherwise the mechanism will be blocked.

### Changing the blade

Disconnect the power supply and put on the blade protection before changing the blade. Use work gloves for your own safety.

- tip the machine
- put on the blade protection (enclosed in the tool set)

**Warning! Very sharp blade! You may cause injury without using the blade protection!**

- secure the tipped machine from tilting over
- clean and loosen screws of the blade mounting

**Attention!** Set the wrench at a position opposite to the blade to avoid injury.

- replace the blade

Make sure that the sharp bevel of the blade always shows upwards and the blade is fitting in exactly the position of the old one.

### Changing the driving wheels.

Remove the lynch-pins and pull the wheels from the axle. Do not loose the wheel key under any circumstances!

## 5.0 Use

The Turbo® Stripper removes any bonded floor coverings in strips. This procedure corresponds with the customary method of using a hand floor scraper. The stripper works with a steel blade at very high frequency, minimizing vibration and noise.

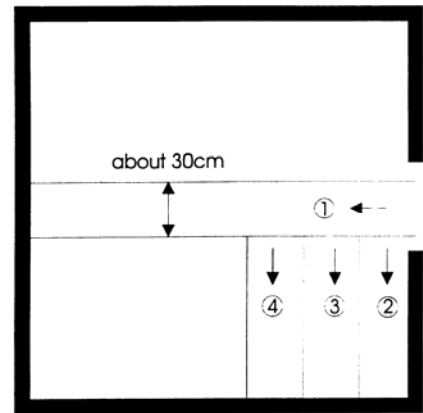
The Turbo® Stripper is self-propelled. The motor actuates both the blade and the machine movement. The blade drive starts as soon as the machine is switched on. The hand clutch will engage the drive.

### Starting

The Turbo® Stripper is equipped with an operating switch located at the top of the handle. **This is a safety switch, which must be held down to engage the Turbo® Stripper.** There is a current limiting protective device which causes a two second delay to full power on start.

Before starting work, cut the floor covering into strips of about 30cm (12 inch). You cannot work faster if you cut wider strips.

To begin, cut one strip crosswise. Then lift the flooring slightly in order to get the blade underneath it. We recommend to cut the first strip at right angles to the main working direction. By so doing access to the adjacent strips is made easier. Cut the strips smaller if the floor covering is bonded very securely, e.g. with an epoxy adhesive.



The blades are sharpened by the floor pavement. Therefore the blade has to be changed only if it is twisted or becomes worn.

The driving wheels are subject to wear. They have to be changed after approximately 16mm (0.6 inch) of the surface has been worn away. Otherwise the working angle of the striking apparatus will not be correct especially critical with cork or foam backed carpets.

## 6.0 Information about various floorings

### **CV-floorings, PVC-floorings and carpets without foam backing**

Cut strips of approx. 30 cm (12 inch) width. If the flooring is bonded very tight, cut strips smaller. The machine should remove the flooring without slipping wheels.

### **Carpets with foam backing**

A sharp blade is essential in order to ensure the floor covering is removed together with the foam backing. Remove floorings across the width, particularly if you have any uneven sub-floor.

### **Tiles**

Use blade of the same width as the tiles and use a new blade. Tiles above size 30 x 30 cm (12 x 12 inch) has to be cut into half. If the sub-floor is uneven, use smaller blades.

In all cases, check from time to time to ensure the blade is still sharp. If it is not or any distortion has occurred, replace it immediately.

## 7.0 Trouble shooting

1. Make sure the machine is connected to a known 120V, 20-amp circuit breaker.
2. All plugs should be firmly connected. Check for any splits or damage to power cord.
3. Failure in Hydraulic Clutch System. (see 7.1)

**Note: In the event of Hydraulic Clutch failure, the Emergency Run Unit, mounted on back of the switch box, can be inserted in place of the hydraulic cylinder. This will allow continued use of the machine without clutch availability. The machine will need to be turned off to move into a new position.**

## 7.1 Repairing the Hydraulic System

To repair the hydraulic system, use the **Sinclair Hydraulic Clutch Repair Kit**, which can be ordered through your local distributor.

### **Hydraulic Clutch Repair Kit**

This kit contains all hydraulic fittings, compression washers, tubing, fluid, and specific tools necessary to completely rebuild the Turbo® Stripper's hydraulic clutch assembly. Not included in the kit is a master cylinder and slave cylinder. If either of these components are damaged and required replacement, you can purchase a complete hydraulic assembly from Sinclair Equipment Company.

The hydraulic fluid provided with the kit is a non-toxic, biodegradable, mineral oil based product, and no special handling or disposal requirements are necessary. You should not,

however, accept any substitutes. Automotive brake fluid and other petro-chemical or glycol based hydraulic products are caustic, will deteriorate the tubing and internal working parts of this system, and should not be used.

### **Repairing the Hydraulic System**

The kit includes two nylon blocks with grooves cut in them to assist in installing the barbed fittings on the tubing ends.

Using a sharp knife cut the end of the tubing to be installed as clean and square as possible.

In a vise, clamp the end of the tube in the nylon blocks, allowing about 1/2 inch of tubing to stick out past the end of the blocks. Using a plastic mallet or similar lightweight hammer, tap the barbed, 90 degree (banjo shaped) fitting into the end of the tubing as far as it will go.

Before installing a fitting on both ends of the tubing, make sure that the spring-like cable sheath #1 for both ends are in place on the tubing.

For a more reliable repair, you should always replace all fittings and compression washers with each new assembly. Each 90-degree connection requires two washers and the slave cylinder bleeder screw needs one.

Measuring the tubing length and installing the tube is best done with the master and slave cylinders installed on the machine. The idea is to mount the 90-degree connectors in the proper direction and with enough tubing to avoid stressing the barbed fitting/tubing connection during normal use.

### **Filling and Bleeding The System**

Turn the clutch adjustment screw #2 (2mm Allen screw, located in the handle behind the lever of the master cylinder #7) counterclockwise as far as it will go.

Insert the straight barbed adapter into the top end of the clear tubing and insert the tip of the syringe into the bottom end of the tube.

Fully depress the syringe's plunger to expel all air, dip it in the fluid and draw the plunger back slowly to fill the syringe at least half way.

Remove the bleeder screw #3 from the slave cylinder #8 at the rear of the machine and attach the syringe assembly in its place.

Remove the bleed screw #4 (plug) from the master cylinder and depress the syringe's plunger to force fluid through the system. Allow enough fluid to flow from the master cylinder, to ensure that no air remains in the system. If desired, the master cylinder can be removed from the machine's handle and placed in a rag. Care must be taken, however, to maintain adequate altitude between the cylinders, to ensure the absence of air. Always fill from bottom to top.

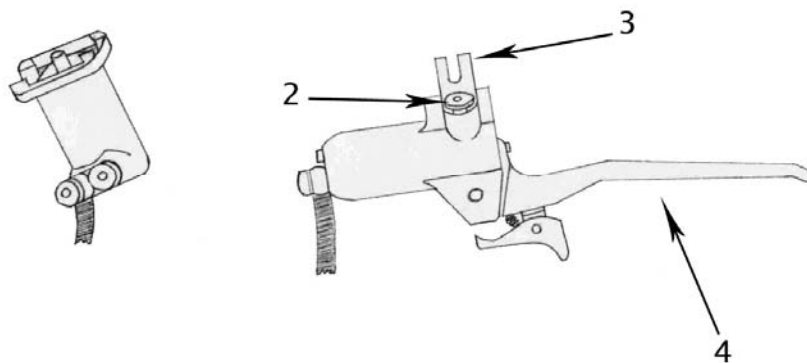
In the following order:

1. Replace and tighten the plug in the master cylinder #4;
2. Remove the syringe assembly from the slave cylinder; and
3. Reinstall the bleeder screw #3, using a fresh compression washer.

Wipe clean any excess fluid. Mount the master cylinder on the handle, if necessary, and test the function of the hydraulics.

Adjustments can then be made by tightening the adjustment screw on the master cylinder #2. If the master cylinder is too tight, you can allow some fluid to escape by loosening the master cylinder bleeder plug #4, and gently squeezing the lever very slightly to allow a few drops of fluid out. To avoid allowing the cylinder to suck in air, be sure to tighten the bleeder plug securely before releasing any pressure applied to the lever #5. The adjustment can then be made using the adjustment screw #2. The clutch must engage fully and remain engaged when you set the lever lock #6.

- 1 Clutch Assembly Complete – T015032**
- 2 Screw For Clamp – T0999996**
- 3 Clamp – T0999995**
- 4 Lever Blade W Plunger & Lock – T0999994**

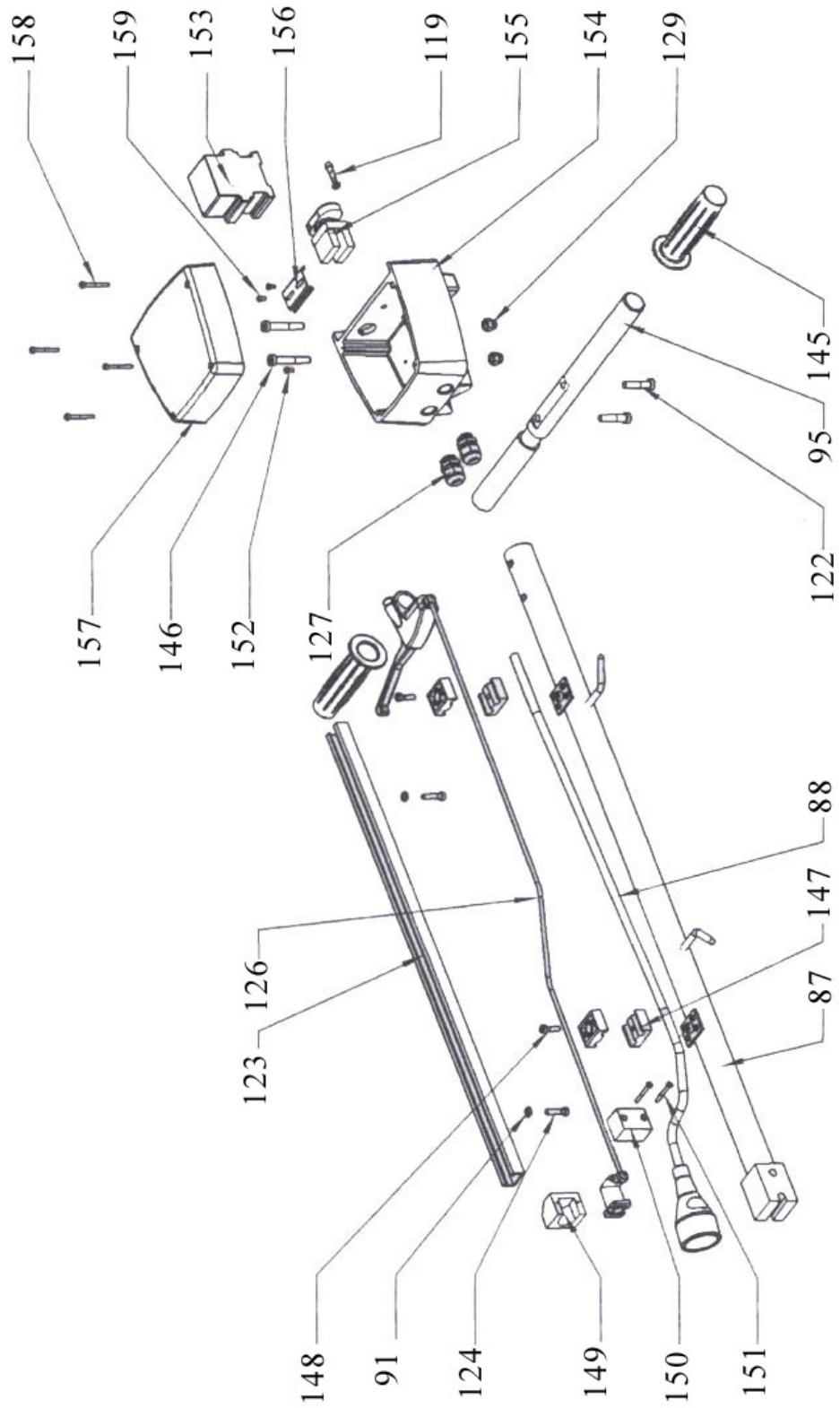


<b>Schematic #</b>	<b>Pcs</b>	<b>Description</b>	<b>Part #</b>
1	1	Chassis	T015106
4	2	Piston block	T016228
5	16	Screw M 8x30	T014736
6	20	Washer, M8	D014860
8	1	Lubricating nipple	T014914
12	1	Cover Weight (Green)	T015109
13	2	Screw M 8 x 30	T014735
14	1	Turbo Counter Weight (Black)	T015116
15	2	Handle for Black Wt Jacket	T014926
16	8	Screw M5 x 30	T014795
18	2	Washer, 10 mm	T014829
19	1	Bushing 20x26x20	T014909
20	1	Blade holder Turbo / Jaw	T015126
21	1	Striking foot Turbo	T015127
22	9	Cyl. screw M8x20 - 6mm	T014734
23	4	Screw M10x25	T014763
24	2	Tension pin 10x20	T014890
25	2	Piston rods	T015132
26	2	Washer, M13	T014833
27	2	Screw M 12x30	T014744
28	2	Connecting block (Left or Right)	T015417
30	2	Wheel pin	T014888
31	6	Washer, 16 mm	T014831
32	2	Drive wheel B16	T015135
33	1	Gear mounting block right	T015033
34	4	Screw M 10x45	T014741
35	6	Safety washer, 10 mm	T014861
36	1	Clutch holder	T015117
37	1	Clutch stop device	T015118
38	1	Pressure bolt	T015120
39	1	Emergency run unit	T016232
41	1	Pressure spring D 206	T014897
42	1	Wing screw M 5x16	T015133
44	1	Thread pin M 5x10	T014791
45	1	Cyl. pin 6x32	T014874
46	3	Washer M6	D014859
47	1	Clutch disc	T015119
48	1	Gear block	T015140
49	1	Drive belt small	T014938
52	1	Drive shaft axle	T015142
53	2	Key 5x5x32	T014902
54	1	Gear mounting block left	T015036
55	1	Washer Plate	T015153
57	2	Nylon wheel/Transport Wheel	T014954
58	2	Split-pin 3, 2 x 32	T014886
59	1	Transport axle	T015143
61	1	Nut key 6x6x32	T014904
62	1	Connecting rod	T015144
63	1	Connecting rod pin	T014875
64	2	Ball bearing 6206	T014710
65	2	Circlip I 62	T014856
66	1	Circlip A 17	T014850

67	2	Ball bearing 6305	T014712
68	2	Circlip A 30	T014853
69	1	Excenter shaft Turbo	T015145
70	1	Nut key 4x4x20	T014901
71	1	Key 6x6x25	T014903
72	1	Circlip A 25	T014852
73	1	Bearing block right or left	T017079
75	4	Screw M 10x70	T014742
76	8	Cyl. pin 8x40	T014876
77	1	Motor 2400 Watt - 110 Volt	T015056
78	1	Drive sprocket Z 20	T015129
79	1	Electrical cord with plug	T014973
80	1	Motor Plate Bracket	T016860
81	4	Screw M 5x25	T014721
82	4	Washer, 5 mm	T014858
84	1	Drive belt large	T014937
88	1	Electrical cord short	T014974
94	1	Cover	T015154
95	1	Handle Assy W/Grey Grips	T07 485 0190A
96	5	Screw M6x12	T014799
97	1	Electrical cord long	T014970
98	1	Belt pulley Z 24 - Large	T015155
99	1	Belt pulley Z 12 - Small	T015156
101	1	Groove ring	T014845
102	1	Locknut / Wingnut M10	T014820
103	2	Cyl. screw M 6x25	T014731
104	2	Washer, M12	T014862
105	1	Starter disc / PVC Washer	T015157
107	1	Switch Housing, Large	T015430
110	2	C/S screw M4x20	T014807
113	1	Motor cover	T015130
115	1	Screw M 5x90	T014724
116	1	Bushing 20x26x11	T015141
117	1	Bushing 20x26x30	T014910
118	4	Washer M6	T014835
119	1	Indicator Light	T014984
121	4	Screw, M4 x 12	D015210
122	2	Cyl. screw M8 X 40	T014738
123	1	Cable cover	T015123
124	2	Cap Screw M6 x 25	D00912415B
126	1	Hydraulic-clutch cylinder	T015032
127	1	Screw connection	T014992
128	1	Tilt support / Foot Pad	T015125
129	2	Cap Nut, M8	BR014825
131	1	Handle for Green Wt Jacket	T014917
132	2	Cyl. Screw, micro M6 x 20	T014752
133	4	Bracket for Chains	T015107
135	1	Short T-Bolt Post / Conductor	T015110
136	2	Cyl. Screw, M8 x 16	T017651
137	1	T-Bolt Long	T015111
138	1	T-Bolt Short	T015112
140	2	Cyl. Screw, M8 x 50	T017551
141	2	Elastic Stop Nut M8	T014816

142	2	Cyl. Screw M10 x 80	T014736
143	4	Washer M10	T017760
144	1	Elastic Stop Nut M10	T014816
145	2	Grip Cover	T014922
146	2	Cyl. Screw M8 x 50	T017551
147	4	Double Clamp	T017511
148	2	Cyl. Screw M6 x 20	T014730
149 + 150	1	Clutch Assembly Twist Lock	T019775
151	2	Countersunk Screw	T017701
152	2	Cyl. Screw M4 x 8	T017473
153	1	Switch	T017439
154	1	Switch Housing	T021207
155	1	Switch-Relay	T021233
156	1	Top Hat Rail	T020969
157	1	Cover Large	T020970
158	4	M4 x 45 Screw	T017684
159	2	Oval Head Screw M4 x 6	T021231
182	1	Angle Bracket	T016083
		<b>Without Drawing:</b>	
		Tool Kit	T015162
		Motor Brush	T025768500
		Carrying Chain w/Handle	T015161
		Weight Cradle Bolt	TR91290A438
		6mm Wrench	T7289A17
		Trnsprt Wheel Assy Complete	T015015
		Needle Bearing for Gear Box	T009500200
		Turbo Gear Box Bearing Seal	T015159
		Hydraulic Clutch Repair Kit	T0999998
		2016 Bushing (for T28/T29)	T014913
		Cradle Only	T025712001
		Weight w/Handle	T025712002
		Hydraulic Mineral Oil 2oz	T0999999





## TURBO, EXTRO, SUPER, BRAVO, DURO & ECO STRIPPER SUGGESTED BLADE SELECTION

### BRAVO/DURO/ECO STRIPPER

**#10-4906 8"Rigid.** Our standard blade for removal of vinyl, carpet, adhesive, etc. Bevel edge of blade should be up for concrete and down for wood sub-surfaces. Precutting of carpet and vinyl needed.

**#10-4904 8"Flexible.** Same as above, yet for uneven concrete surfaces and some soft foam back carpet.

**#10-4907T 8"Tile Blade.** For use on VAT and VCT tile. Prevents tile from jamming in between blade and blade holder. A must for tile removal to protect blade holder.

**#10-4909 8"Razor Blade Attachment.** An adapter to secure razor blades for removal of adhesives, paints and thin films. Inexpensive and an excellent choice for complete clean up after floorcovering removal.

**#10-4903 8"X 5"Rigid.** Ideal for hard to reach areas such as toe kicks, under radiators, etc. Also used for clean up of small areas of parquet, ceramic, etc.

**#10-4906D 8"X 2.5"Rigid Self Dicing.** For use on carpet, rubber or vinyl. A real time saver, on pre-cutting necessary since blade will cut strips with knife edged sides.

### TURBO/EXTRO/SUPER STRIPPER

\*Super Stripper uses 12" Blades Only

**#10-4801D 14"Self-Dicing Blade.** For use on carpet, rubber or vinyl. A real time saver, on pre-cutting necessary since blade will cut strips with knife edged sides.

**#10-4651T 12"Tile Blade.** For use on VAT and VCT tile. Prevents tile from jamming in between blade and blade holder. A must for tile removal to protect blade holder.

**#10-4807 14"X 5"Ceramic/Parquet Blade.** Ideal for removal for ceramic tile, marble, parquet, and other wood floors. Precutting needed for plank floors.

**#10-4809 Special Ceramic/Parquet Blade.** This ¼" thick heavy duty blade is designed especially for the ceramic tile and hardwood/parquet removal applications. The 14" wide blade extends out nearly 4" and is designed at a specific angle to work more efficiently in cutting and lifting of thick materials. Best suited for the long run, constant use in tile/wood applications for extended life and performance.

**#10-4802 14"Rigid, #10-4652 12"Rigid.** The standard blade for carpet, vinyl or adhesive removal, pre-cutting of the floor is needed.

**#10-4804 6"Rigid, #10-4803 8"Rigid.** Use these blades for difficult removal like, epoxy, rubber floors, sport surfaces, etc. Always position these blades to far left hand side of machine.

**NOTE:** All jobs can vary in difficulty of removal. Whatever blade you are using it may be necessary to take a smaller bite in removal so it is less stressful on the operator as well as the machine. If you have any questions on blade selection or choice of machine, please do not hesitate to call Sinclair Equipment Company or your nearest distributor.

## STANDARD WARRANTY

SINCLAIR EQUIPMENT COMPANY'S tools are warranted to be free of defects in workmanship and materials for a period of one year from the date of original purchase. Should any trouble develop during this one year period, return the complete tool, freight prepaid, to SINCLAIR'S authorized Service Center. If inspection shows the trouble is caused by defective workmanship or materials, SINCLAIR EQUIPMENT COMPANY will repair, or, at its option, replace without charge.

- This warranty does not apply to malfunctions caused by damage, unreasonable use, faulty repairs made by others, or failure to provide recommended maintenance.
- The warranty is void if the product is altered by the original consumer purchaser, or if it is used in a manner not recommended by the manufacturer.
- The warranties do not cover consequential damages or transportation charges incurred with the replacement or repair of SINCLAIR EQUIPMENT COMPANY products.
- Not responsible for lost job or down time.

In no event shall SINCLAIR be liable for any indirect, incidental, or consequential damages from the sale or use of the product. This disclaimer applies both during and after the term of this warranty.

SINCLAIR EQUIPMENT COMPANY disclaims liability for any implied warranties, including implied warranties of "merchantability" and "fitness for a specific purpose", after the one year term of this warranty.

This warranty gives you specific legal rights, and you may have other rights which vary from state to state. Should you have any questions, contact SINCLAIR EQUIPMENT COMPANY at (530) 626-9386.

To obtain warranty service, deliver or send the complete tool, prepaid, to SINCLAIR EQUIPMENT COMPANY. Be sure to include the following information:

- Nature of failure;
- Name and address of distributor where tool was purchased;
- Application of tool when rendered defective; and
- Proof of purchase.

To obtain individual repair parts, contact SINCLAIR EQUIPMENT COMPANY with the following information:

- Tool model number;
- Item part number; and
- Description of part.